

VISIONVIEW DISPLAY PANEL AND WEB HMI

Cognex® In-Sight® vision systems and DataMan® barcode readers offer multiple runtime visualization options to help monitor live vision inspections and access tool parameters directly from the factory floor.

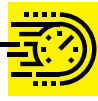
VisionView Application Software

The VisionView® operator interface is ideal for monitoring and controlling In-Sight vision systems and image-based barcode readers on the factory floor and allows operator controls specific to the application.



Automatic system discovery

Quickly detect any Cognex In-Sight or DataMan system on your network.



Fast image updates

See the most recent inspection images to view your process in real time.



Mix and match

View In-Sight and DataMan systems in a tiled view—up to 9 connections on VisionView 900 and up to 16 on VisionView PC.



Access to CustomView and EasyView

The operator controls created in the spreadsheet or items selected from In-Sight EasyBuilder® software can appear on the VisionView screen.



Graphical interface

Display full color images, with graphic overlays and operator controls.



Font training during run-time

Eliminate downtime during changeovers by training fonts at run-time, without a PC—ideal for OCR/OCV applications.

VisionView Platforms

VisionView application software is available on multiple platforms.

VisionView 900 Display Panel

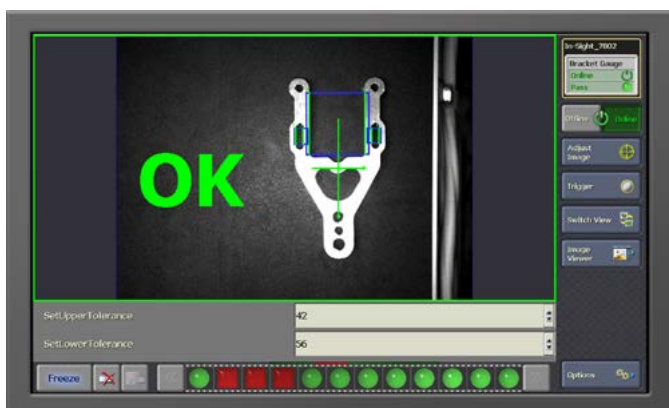
VisionView 900 HMI display panel monitors and controls In-Sight and DataMan applications at run-time. The password-protected interface allows operators to load jobs, adjust vision tool parameters and regions of interest, and see inspection results directly on the factory floor, without a PC.

- 9-inch/229mm touch screen provides total control during run-time operation
- Green/red LED indicator displays pass/fail results
- 2 USB ports for connecting a mouse or keyboard, or storing images and jobs on a removable drive
- Connect and monitor up to 9 systems



VisionView PC Software

VisionView PC software runs the VisionView interface on standard Windows® PC, with no additional hardware required.



VisionView CE-SL for Third-party CE Panels

To save valuable space on the production line, VisionView CE-SL software runs on Windows CE-based HMI panels from Rockwell, Siemens, Beijer and Advantech.

Web HMI

A simple point-and-click interface allows users to configure customized HMI interfaces that provide secure, platform independent visualization via web browser-enabled devices on the network. Operators and controls engineers can monitor inspections, modify parameters, save and load job files, and view performance statistics.

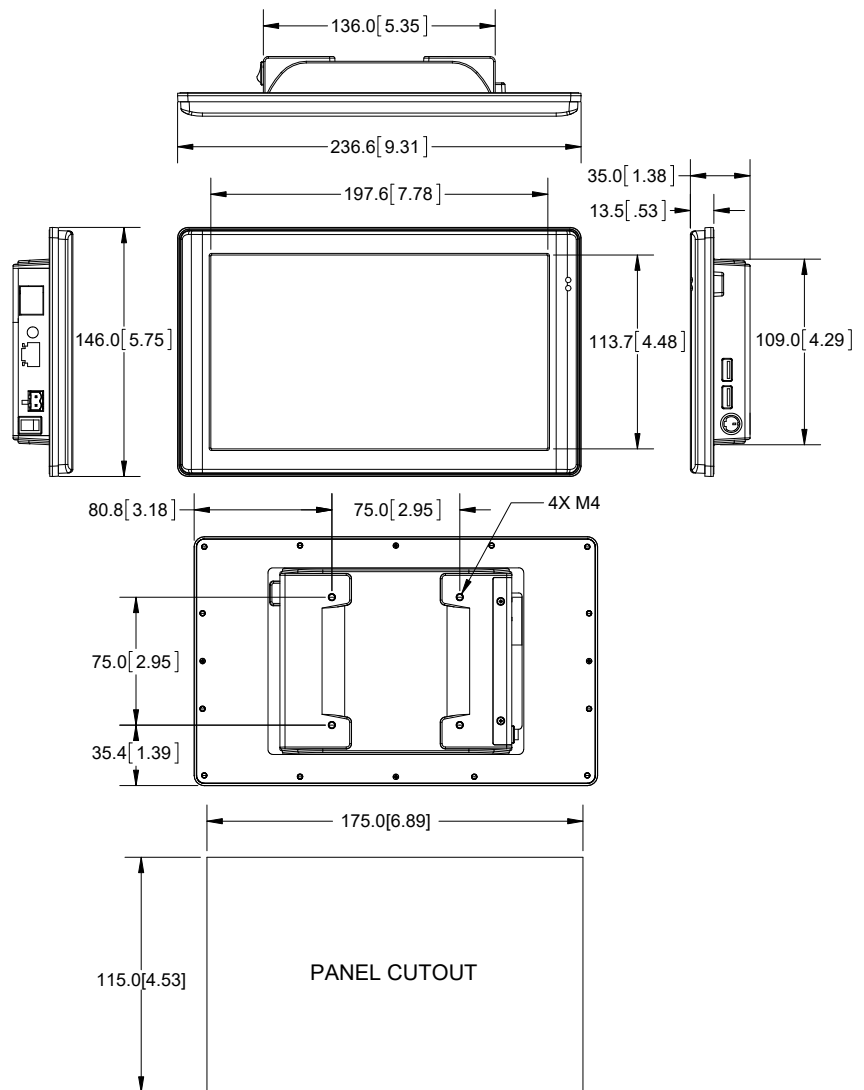


In-Sight Display Control

The In-Sight ActiveX Display Control is available for developers who need to display inspection images in custom programs as part of a complete machine control application.

VISIONVIEW 900 SPECIFICATIONS

Display	Size	9in/229mm WVGA (10:6 aspect ratio)
	Type	TFT LCD
	Resolution	1024 x 600 (614,400 pixels)
	Number of Colors	262,144 (18 bits/pixel)
	Luminance	300 nit
	Backlight Life	20,000 hours
Touchscreen	Analog resistive: 4 wire	
Memory	512MB DDR2	
Storage	2GB of non-volatile flash	
I/O	Network	1 Ethernet port, 10/100 BaseT, TCP/IP Protocol, Full Duplex
	USB	2 Host USB 2.0 (480 Mb/sec) ports
Power	24VDC±10%, .5A	
Mounting	Standalone mounting panel with optional accessory mounting kit. Optional stand accessory.	
Environmental	Protection	IP65 or NEMA 4 when properly panel-mounted in an IP65 or NEMA4 rated enclosure or panel
	Shock	30 G Shock per IEC 68-2-27
	Vibration	2 G from 10-2000 Hz. Vibration per IEC 68-2-6
	Operating Temperature	0°C to 50°C (32°F to 122°F)
	Storage Temperature	-10°C to 60°C (14°F to 140°F)
Regulatory	CE, FCC, TÜV SÜD NRTL, RoHS	



VISIONVIEW PC SOFTWARE SPECIFICATIONS

Hardware Requirements	<p>Intel® Pentium® 4 processor running at 1 GHz (or equivalent)</p> <p>512MB of available RAM</p> <p>500MB of available hard-disk space</p> <p>Video card capable of displaying 800x600 resolution at 16-bit color depth. The DPI Display setting must be set to 96 DPI</p> <p>Network Interface Card (at least 100Mbps)</p>
Operating System Requirements	<p>Microsoft Windows Server® 2008 R2, Service Pack 1 (64-bit)</p> <p>Microsoft Windows 7 Professional, Service Pack 1 (32-bit and 64-bit)</p> <p>Microsoft Windows 10 Professional (64 bit)</p>
Software Requirements	<p>The Microsoft .NET Framework 3.5 Service Pack 1 must be installed before installing the VisionView PC software. Microsoft .NET Framework 3.5 Service Pack 1 will attempt to install automatically if it is not detected on the PC</p>

VISIONVIEW CE-SL SPECIFICATIONS

The VisionView third-party CE panel software license supports the following panels:

- Rockwell PanelViewPlus Series 6-700, 1000, 1250 and 1500
- Siemens MP-277, MP-277 Mobile, and MP377

This is a partial list, please contact your Cognex sales representative for the most current listing.

Compatible Cognex Systems

Cognex's Web HMI is compatible with the full range of In-Sight vision sensors and systems. VisionView software and display panel supports all In-Sight sensors and systems and DataMan fixed-mount and handhelds barcode readers.



COGNEX

Companies around the world rely on Cognex vision and barcode reading solutions to optimize quality, drive down costs and control traceability.

Corporate Headquarters One Vision Drive Natick, MA 01760 USA

Regional Sales Offices

Americas

North America +1 844-999-2469
 Brazil +55 (11) 2626 7301
 Mexico +01 800 733 4116

Europe

Austria +49 721 958 8052
 Belgium +32 289 370 75
 France +33 1 7654 9318
 Germany +49 721 958 8052

Hungary +36 800 80291
 Ireland +44 121 29 65 163
 Italy +39 02 3057 8196
 Netherlands +31 207 941 398
 Poland +48 717 121 086
 Spain +34 93 299 28 14
 Sweden +46 21 14 55 88
 Switzerland +41 445 788 877
 Turkey +90 216 900 1696
 United Kingdom +44 121 29 65 163

Asia

China +86 21 6208 1133
 India +9120 4014 7840
 Japan +81 3 5977 5400
 Korea +82 2 530 9047
 Malaysia +6019 916 5532
 Singapore +65 632 55 700
 Taiwan +886 3 578 0060
 Thailand +66 88 7978924
 Vietnam +84 2444 583358

© Copyright 2020, Cognex Corporation. All information in this document is subject to change without notice. All Rights Reserved. In-Sight, VisionView, DataMan, EasyBuilder and Cognex are trademarks of Cognex Corporation. All other trademarks are property of their respective owners. Lit. No. VVDS-01-2020

www.cognex.com