

## IN-SIGHT 8000 SERIES VISION SYSTEMS



The In-Sight® 8000 series, a new family of ultra-compact, standalone smart camera vision systems, delivers industry-leading vision tool performance at PC speeds, all in the form factor of a traditional GigE Vision® camera.

- World's smallest, full line, standalone vision system available in VGA, 1MP, 2MP and 5MP resolutions
- Powerful vision tool library including new PatMax RedLine™ and color ID tools
- Step by step application setup with EasyBuilder, and flexibility of added control with spreadsheet and scripting
- High Speed communication with Gigabit Ethernet
- Fast acquisition VGA, 1MP and 2MP cameras

### Compact vision system fits just about anywhere

In-Sight 8000 series compresses an entire stand-alone vision system into an amazingly small package. Its compact size, together with Power over Ethernet (PoE) to minimize cabling makes the In-Sight 8000 vision system family ideal for integrating into tight spaces on robots and hard-to-reach machinery anywhere on the production line. From high acquisition speed VGA to high resolution 5MP system, the In-Sight 8000 delivers the resolution and speed you need for your application, in a package the size of an image capture only camera.

### PatMax, completely reinvented

PatMax RedLine was designed with one goal in mind: blazing fast pattern matching. In typical applications, PatMax RedLine runs 4 to 7 times faster than PatMax — or faster! — with no loss of search accuracy or robustness. Together with PatMax RedLine, the 8000 series can reduce cycle times and increase throughput without compromising inspection accuracy.

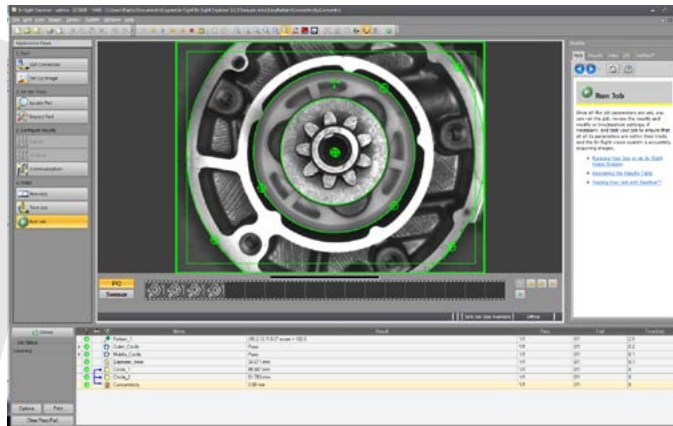
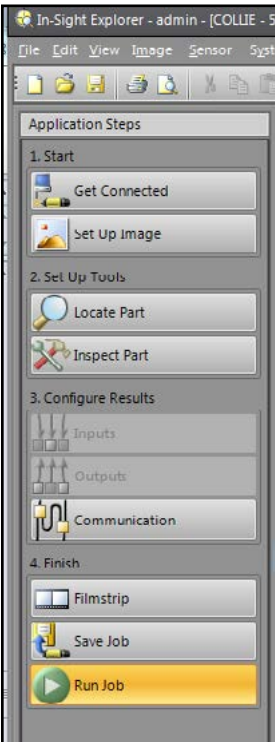


# High-performance vision tools

The In-Sight 8000 Series offers vision tools that are optimized to run at high speed. This includes PatMax RedLine pattern matching, image processing, color extraction, advanced defect detection, ID (1-D, 2-D, OCR, and color) as well as the foundation tools like blob, edge, histogram and non-linear calibration.

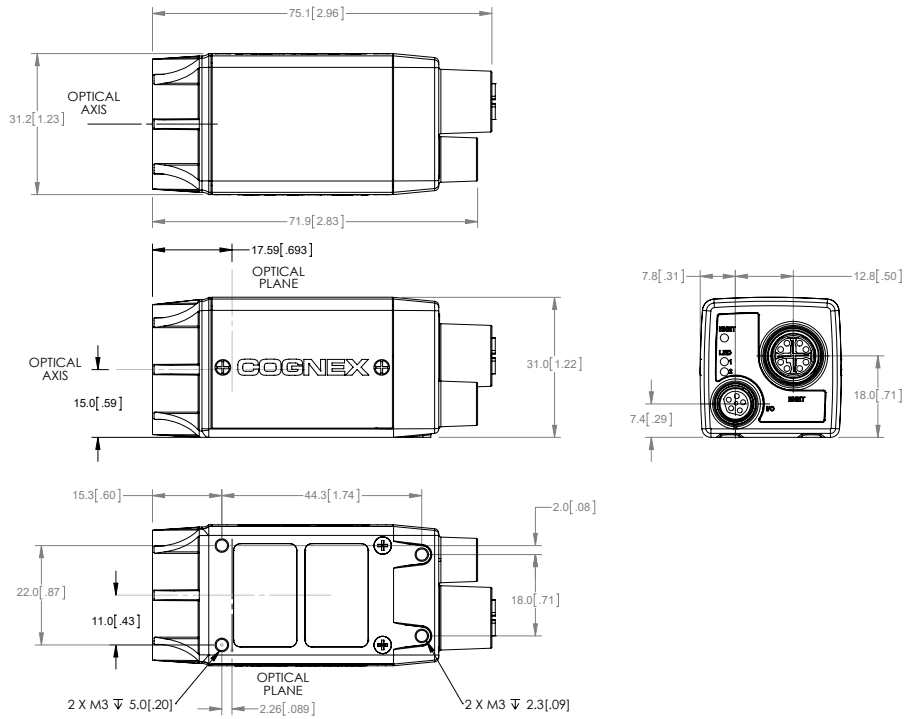
# Flexible and easy integration

Like all In-Sight vision systems, the In-Sight 8000 series are conveniently setup with the In-Sight Explorer software. In-Sight Explorer combines the guided step by step setup of EasyBuilder with the additional power and flexibility of the spreadsheet for greater control and customizing of application data. Also included is the new scripting function which uses standard JavaScript to simplify data-intensive tasks like geometric analysis of hundreds of points, parsing and comparison of text or ID code results, or complex final result logic.

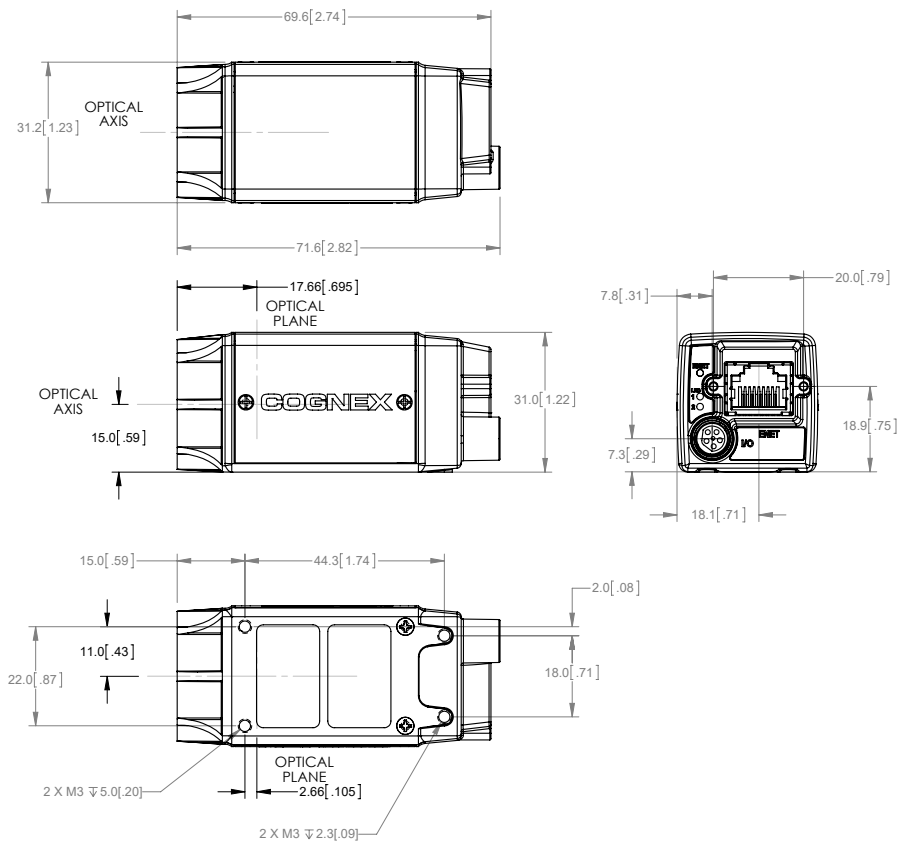


Row	Image	Row	Col	Angle	Edge 1	Calib
103	Image	Row	Col	Angle		
104	Fixture	0.000	0.000	0.000		
105	Row	Col	High	Wide	Angle	Curve
106	Region	401.327	42.743	60.782	44.794	36.716
107	Tool Enable	Include	In	J	Edge	Cont
108	1.000	<input checked="" type="checkbox"/>	25	Both	Best Sc	10
109	Result	Invert	Show Mid-Point			Enabled
110	Present	<input type="checkbox"/>	<input checked="" type="checkbox"/>			1.000
111	Focus	Tool Pass	Tool Fail	Status	Pass/Fail	Show Grap
112	0.000	1	0	1	1.000	1.000
113	Row0	Col0	Row1	Col1	Point	Plot
114	Edges	387.007	61.944	435.401	97.416	411.704
115		8.785	59.087	14.126	66.581	11.454
116	Plot	Plot	Point			Point
117	Count	Passes	Failures	Errors	Total	
118	1	0	0	1	0.000	
119					0.071	End
120						
121	Find a line				Edge 2	
122	Image	Row	Col	Angle		Calib
123	Fixture	0.000	0.000	0.000		
124	Row	Col	High	Wide	Angle	Curve
125	Region	465.083	572.340	60.782	44.794	140.501
126	Tool Enable	Include	In	J	Edge	Cont
127	1.000	<input checked="" type="checkbox"/>	25	Both	Best Sc	10
128	Result	Invert	Show Mid-Point			Enabled
129	Present	<input type="checkbox"/>	<input checked="" type="checkbox"/>			1.000
130	Focus	Tool Pass	Tool Fail	Status	Pass/Fail	Show Grap
131	0.000	1	0	1	1.000	1.000
132	Row0	Col0	Row1	Col1	Point	Plot
133	Edges	450.112	554.180	401.715	589.797	425.914
						571.989

## In-Sight 8200, 8400, 8401, 8402



## In-Sight 8405



## SPECIFICATIONS

	In-Sight 8200	In-Sight 8400	In-Sight 8401	In-Sight 8402	In-Sight 8405
Performance Factor	1X	2.3X			
Image Type	Monochrome and Color				Monochrome
Job/Program Memory	512 MB				
Image Processing Memory	512 MB				
Sensor Type	CMOS, global shutter				CMOS, rolling shutter
Resolution	640 x 480	1280 x 1024	1600 x 1200	2592 x 1944	
Acquisition Rate (fps)	217 (monochrome) 135 (color)	76 (monochrome) 45 (color)	53 (monochrome) 33 (color)	13 (monochrome)	
Lens Type	C mount				
Indicator LEDs	Network status; 2 configurable LEDs				
Built in IO	1 dedicated trigger in, 2 high speed outputs (including strobe). Additional IO available via external IO modules: CIO-MICRO				
Power	Class 2 Power over Ethernet (PoE)				
Industrial Connectors	M12: Power/Ethernet; M8: I/O				RJ45: Power/Ethernet; M8:IO
Industrial Protocols	OPC UA, EtherNet/IP with AOP, PROFINET Class B, iQSS, Modbus TCP, SLMP/SLMP Scanner, CC-Link IE Field Basic				
Size	31 mm x 31.2 mm x 75.1 mm				31 mm x 31.2 mm x 71.6 mm
Weight	132.2 g				78 g
Network Speed	1G (1000)/100/10 Mbps				
Rockwell Add-on Profile	Yes				

Note: All In-Sight 8000 models have full vision tool suite with PatMax. Optional PatMax RedLine tool.

# COGNEX

Companies around the world rely on Cognex vision and barcode reading solutions to optimize quality, drive down costs and control traceability.

Corporate Headquarters One Vision Drive Natick, MA 01760 USA

### Regional Sales Offices

#### Americas

North America +1 844-999-2469  
Brazil +55 (11) 2626 7301  
Mexico +01 800 733 4116

#### Europe

Austria +49 721 958 8052  
Belgium +32 289 370 75  
France +33 1 7654 9318  
Germany +49 721 958 8052

Hungary +36 800 80291  
Ireland +44 121 29 65 163  
Italy +39 02 3057 8196  
Netherlands +31 207 941 398  
Poland +48 717 121 086  
Spain +34 93 299 28 14  
Sweden +46 21 14 55 88  
Switzerland +41 445 788 877  
Turkey +90 216 900 1696  
United Kingdom +44 121 29 65 163

#### Asia

China +86 21 6208 1133  
India +9120 4014 7840  
Japan +81 3 5977 5400  
Korea +82 2 539 9980  
Malaysia +6019 916 5532  
Singapore +65 632 55 700  
Taiwan +886 3 578 0060  
Thailand +66 88 7978924  
Vietnam +84 2444 583358

© Copyright 2019, Cognex Corporation. All information in this document is subject to change without notice. All Rights Reserved. Cognex, PatMax, In-Sight, and EasyBuilder, are registered trademarks of Cognex Corporation. PatMax Redline, OCRMax, and QuickBuild are trademarks of Cognex Corporation. All other trademarks are property of their respective owners. Lit. No. ISM8000-DS-10-2019-EN

[www.cognex.com](http://www.cognex.com)